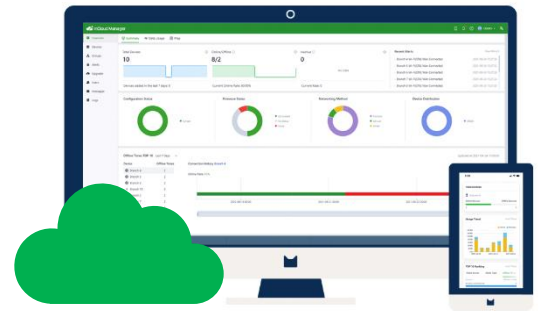


InCloud Manager Service

A More Intelligent, Concise, and Secure Cloud Platform



InCloud Manager Overview

InCloud Manager provides one-stop remote deployment and centralized management of networks and devices for branches, enterprises, and IoT applications, without the complexity and cost of traditional networks.

InCloud facilitates enterprises to migrate their network management work to the cloud, which can liberate IT personnel free from repetitive network operation, and allow them to spend less time on managing network and network infrastructure, therefore focusing on more valuable things for themselves and the company.

InCloud Manager combined with ER805 edge router to create intelligent, simple, secure network cloud management solutions, can help enterprises to achieve efficient business growth, reduce management costs, increase efficiency and enhance the competitiveness of digital business development.

Highlights

- Zero-Touch network deployment
- Unified management of cellular, wired, and wireless networks
- SD-WAN overlay networking between branches
- Connector Enables Rapid Control of Remote Terminals
- Automated network monitoring, malfunction alarm, and failure diagnosis
- Comprehensive network status and applications monitoring
- Full network visibility and flexible network control
- Continuous feature updates delivered from the cloud and the hardware
- In-depth network quality analysis and insight
- Enhanced network access experience
- Convenient mobile APP management

 Enhance Visibility

 Improve Efficiency

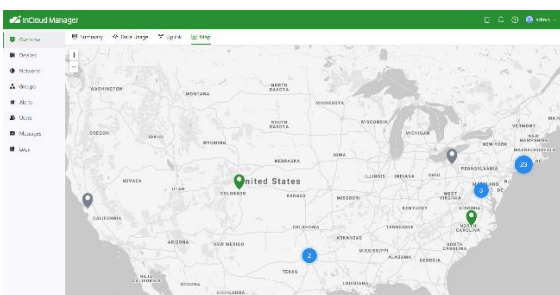
 Reduce Input

Cloud Managed Networks, 100% Smart & Centralized

The cloud management mode of InCloud can quickly centralize resources. After network infrastructure is connected to the cloud, the site no longer needs personnel on duty. IT personnel can access the business outlets from any position, breaking all kinds of distance, geography, and climate restrictions. Control network anytime and anywhere to improve management efficiency and network flexibility.

◆ Zero-Touch Rapid Deployment

Non-IT personnel can easily complete the on-site installation of plug-and-play devices, and connect the devices to the internet after simply powering on the SIM card. IT personnel can implement the initial configuration of the device from the cloud without leaving home.

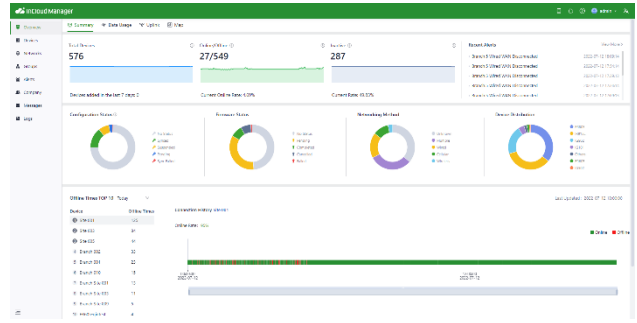


◆ Site Distribution Map

Through the unified map view, we can intuitively know about the network distribution of the whole business and the network connection status of the site.

◆ **Scheduled Firmware Upgrade**

InCloud Manager supports scheduled upgrade tasks for batch devices, which are automatically upgraded at scheduled points in time so that IT staff can focus on more important things or enjoy carefree leisure time.



◆ **Flexible Network Configuration**

InCloud Manager uses the Web UI instead of the CLI, and intuitive configuration options to simplify the configuration. It supports configuration replication to quickly obtain the full-service configuration. IT personnel can use group management to immediately apply to batch devices that have common configuration requirements. In addition, the device configuration based on InCloud Manager can achieve offline operation, separation of configuration, and deployment, making cloud collaboration more efficient.

◆ **Automatic Network Monitoring and Alarm**

To enhance the agility of network management, IT personnel can set alarm policies for a large number of devices on InCloud Manager. After faults occur, they can receive an abnormal notice and handle network faults immediately, reducing service losses caused by network interruptions.



◆ **Client Management**

InCloud Manager provides full list monitoring of network members, which can intuitively realize the number of clients under the current network, connection type, connection duration, usage flow, and other important information, so as to analyze the stickiness of the client and gain business insight.

◆ **Network Visibility**

Thanks to the network infrastructure and visible network status, IT can quickly learn network health status, service traffic status, and signal quality status from data graphs. They can also insight into business issues, predict business risks from the data, therefore process network faults, shorten the response time, or even eliminate the potential hazard in advance, ensuring service stability and good experience in the enterprise network environment, and ensuring the development of key services.



SD-WAN Helps to Build A Worry-Free Network

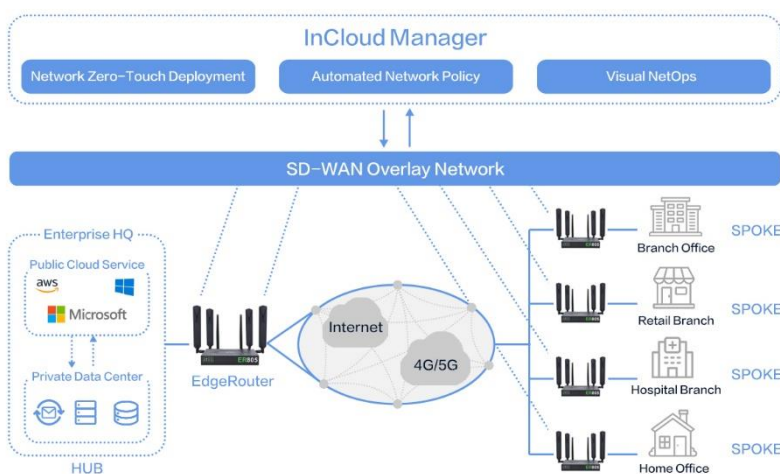
Traditional WAN architectures often face challenges such as difficult operation and deployment, high investment costs, and poor service access experience. The SD-WAN technology introduced by InCloud Manager can easily solve these problems. SD-WAN technology minimizes the burden of managing infrastructure and connectivity for industries by removing the burden of traffic management from physical devices and shifting it to software for deployment and management flexibility.

◆ Always Online Network Connection

InCloud Manager supports link backup. When a fault occurs, the network system can fail over according to the priority to ensure network connectivity. Combined with load balancing technology, it can greatly improve bandwidth utilization while taking into account redundancy and bringing stable and reliable network connections.

◆ Fast Interconnection between Branches

With just a few clicks, InCloud Manager can automatically deliver configuration to the communication device according to the planned network topology. The device will automatically create VPN routes and carry out data encryption and key exchange. IT personnel can also quickly build the network between sites without professional network technical knowledge.



◆ Reduce Dedicated Line Input

The SD-WAN router supports low-cost network connections such as cellular, broadband, and optical fiber, covering almost all networking environments. With the SD-WAN capability, it can significantly reduce network costs and help enterprises quickly achieve large-scale network deployment.



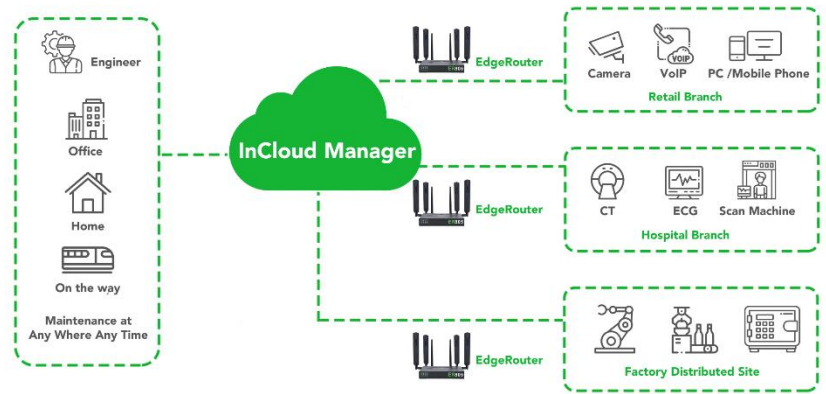
◆ Excellent Access Service Request Experience

InCloud Manager provides flexible traffic shaping technology. Users can customize important services to be forwarded first. At the same time, through link quality detection, intelligent uplink selection, and other technologies, the link switch without perception is realized to ensure a high-quality network experience.

Cloud Connector Enables Rapid Control of Remote Terminals

The Cloud Connector which adopts virtualization network technology can quickly build a network bridge between engineers and machines. Through this secure and stable VPN channel, engineers can remotely maintain terminals, download programs, or transmit terminal data to their service data centers.

The Cloud Connector is suitable for distributed terminals access in various IoT scenarios, like IPC, PLC, HIM, camera, and other controllers. Through Windows, macOS, Android, and iOS clients, engineers can quickly establish a VPN channel at any time and anywhere, with no need to change the local network configuration and extensive IT/OT knowledge.

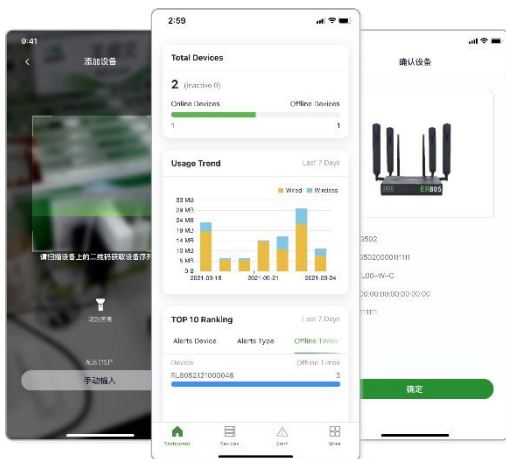


InCloud Manager records the connection time, access duration, and VPN traffic of each access, helping you track each connection. The visible access actions make business management more transparent and safe.



Anytime Anywhere, Control Business In Hand

The mobile APP of InCloud Manager supports scanning code to configure the device to connect to the cloud, without the need to connect the network cable, which can greatly simplify the configuration operation.

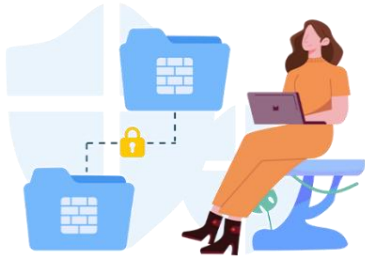


The APP can monitor device interface status, traffic usage, network signals, throughput rate, and latency, view device growth trends, device status distribution, traffic trend analysis, and alarm ranking, and gain insight into device and network conditions from charts.

The portability of mobile phones makes it especially convenient to use mobile applications. As long as you have access to the internet, you can monitor and manage on-site network devices and applications through the APP anytime and anywhere.

Network and Service Security

InCloud Manager provides a variety of security protection strategies and combined with data encryption transmission, unified identity authentication, access control, threat identification, and other comprehensive security protection means, greatly improve the risk defense ability of branch networks, to provide a safe and reliable network environment for enterprises.



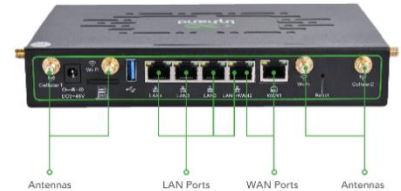
In order to ensure the security and privacy of business data, the system design adopts the separation strategy of business data and management data. InCloud Manager promises that enterprise business data will not be uploaded to the cloud platform, so as to comprehensively protect the privacy and security of business data.

One-Stop IT Hardware

Cloud-Managed Branch Router

Bring new network experience from complexity to simplicity

- Zero-touch deployment
- Comprehensive security
- High-speed gigabit network
- SD-WAN
- Enjoy 5G network
- Delicacy of network management



[Learn more](#)



Learn More Information:
<https://inhandnetworks.com/cloud-service/incloud-manager.html>
Contact Email: incloud@inhandnetworks.com





InCloud Manager Service Subscription Layer

Feature	Description	Essential Plan	Branch Professional Plan
Individual/Bulk Device Configuration	Remote configure devices through GUI, not CLI	√	√
Individual/Bulk Device Upgrade	Remotely upgrade device firmware, support setting upgrade schedule flexibly	√	√
Device management by Group	Support device classification according to business needs, making the management more flexible	√	√
Remote Control Command	Remote reboot device, factory reset	√	√
Connection Status Statistics	Monitor device connection status, network type, etc.	√	√
Network Status Analysis	Monitor device interface connection status, link status, and traffic consumption	√	√
Network Quality Monitoring	Monitor cellular network signals, monitor network delay, jitter, packet loss, and throughput	√	√
Client Statistics	Statistics of client information, connection status, traffic consumption	√	√
Remote Diagnostic Tool	Diagnostic logs, Ping, Traceroute, packet capture, event analysis	√	√
Geolocation management	Support GPS/base station positioning/manual positioning, overview device distribution on the map	√	√
Alert Policy	Support a variety of alarm strategies, such as CPU utilization, link status, and cellular traffic monitoring; support SMS, email, and APP notifications	√	√
Connector	Quickly establish a remote channel to support engineers to remotely access and control terminal equipment		√
SD-WAN Overlay Networking	Quickly build inter-branch networks to reduce dedicated line investment costs		√
MFA	Account multi-factor authentication, comprehensive security	√	√
InCloud Manager APP	Support APP scan code configuration device, APP monitor network status	√	√

InCloud Manager Portal: star.inhandcloud.com