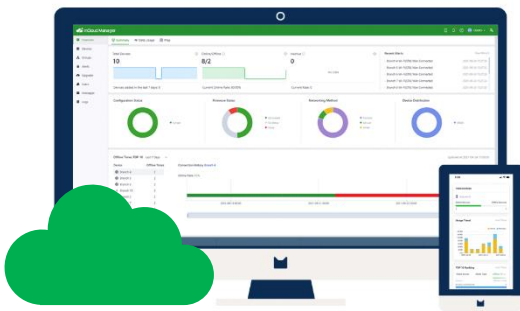


Device Cloud-Managed Solution

Anytime Anywhere, Control Business In Hand



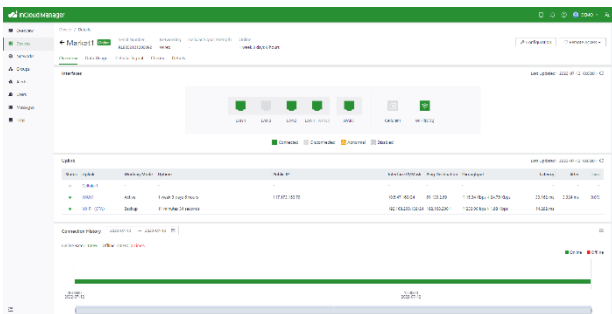
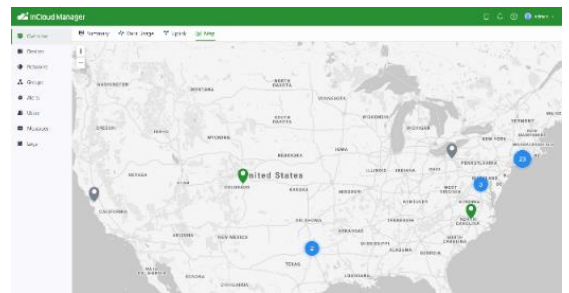
InCloud Manager provides one-stop remote deployment and centralized management of networks and devices for branches, enterprises, and IoT applications, without the complexity and cost of traditional networks.

InCloud facilitates enterprises to migrate their network management work to the cloud, which can liberate IT personnel free from repetitive network operation, and allow them to spend less time on managing network and network infrastructure, therefore focusing on more valuable things for themselves and the company.

The [Essential Plan] application of InCloud Manager is aimed at simple device management. When your business is simple and complex networking applications are not required, a small amount of cloud service investment can meet most of your device management needs.

Zero-Touch Deployment

- IT staff completes the initial centralized deployment configuration in the cloud.
- Non-IT staff completes the hardware installation on site.
- Plug-and-play equipment for quick deployment

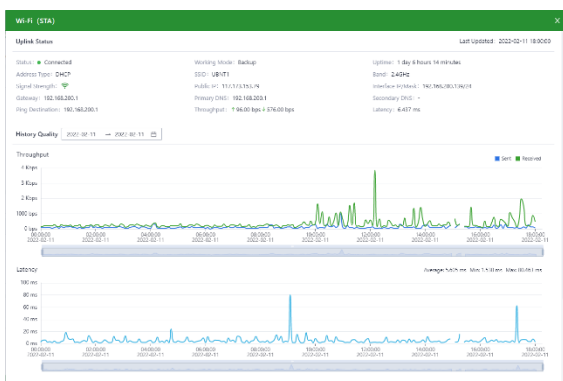
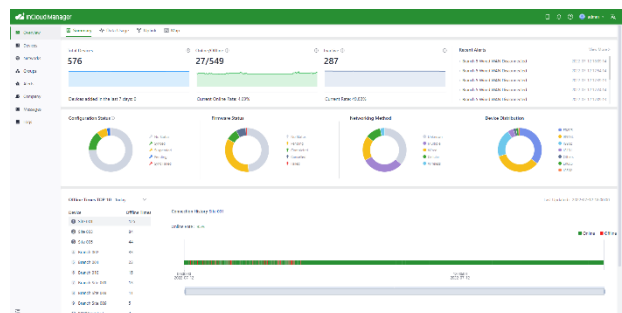


GUI Configuration, Not CLI

- Web GUI configuration, no complex commands.
- Simple configuration and intuitive interfaces ease IT operation without training.

Centralized Cloud Management

- Centralized platform
- Simple and intuitive graphical data
- Simple management and operation interface
- Batch configuration and upgrade

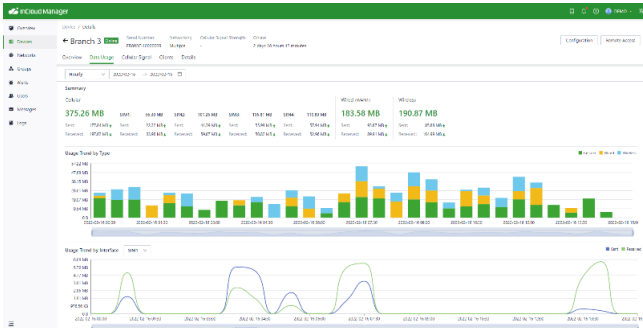


Business Visibility

- Comprehensively analyze cellular network signal conditions, like RSSI, RSCP, RSRP, RSRQ
- Support compare and analyze the delay, jitter, and packet loss
- Multi-dimensional data dashboards
- Various data analyses of traffic, applications, devices, networks, users, etc.

Automatic Network Monitoring and Alarm

To enhance the agility of network management, IT personnel can set alarm policies for a large number of devices on InCloud Manager. After faults occur, they can receive an abnormal notice and handle network faults immediately, reducing service losses caused by network interruptions.



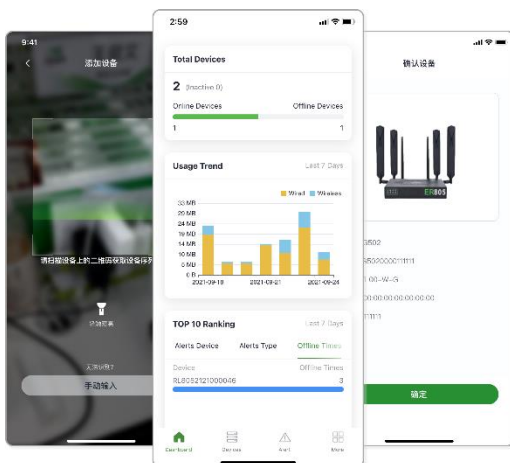
Client Management

InCloud Manager provides full list monitoring of network members, which can intuitively realize the number of clients under the current network, connection type, connection duration, usage flow, and other important information, so as to analyze the stickiness of the client and gain business insight.



Anytime Anywhere, Control Business In Hand

The mobile APP of InCloud Manager supports scanning code to configure the device to connect to the cloud, without the need to connect the network cable, which can greatly simplify the configuration operation.

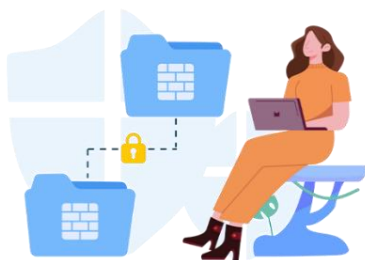


The APP can monitor device interface status, traffic usage, network signals, throughput rate, and latency, view device growth trends, device status distribution, traffic trend analysis, and alarm ranking, and gain insight into device and network conditions from charts.

The portability of mobile phones makes it especially convenient to use mobile applications. As long as you have access to the internet, you can monitor and manage on-site network devices and applications through the APP anytime and anywhere.

Network and Service Security

InCloud Manager provides a variety of security protection strategies and combined with data encryption transmission, unified identity authentication, access control, threat identification, and other comprehensive security protection means, greatly improve the risk defense ability of branch networks, to provide a safe and reliable network environment for enterprises.



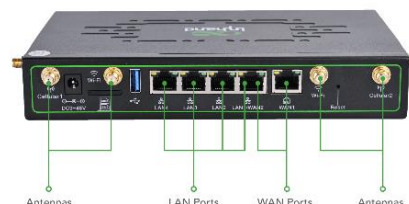
In order to ensure the security and privacy of business data, the system design adopts the separation strategy of business data and management data. InCloud Manager promises that enterprise business data will not be uploaded to the cloud platform, so as to comprehensively protect the privacy and security of business data.

One-Stop IT Hardware

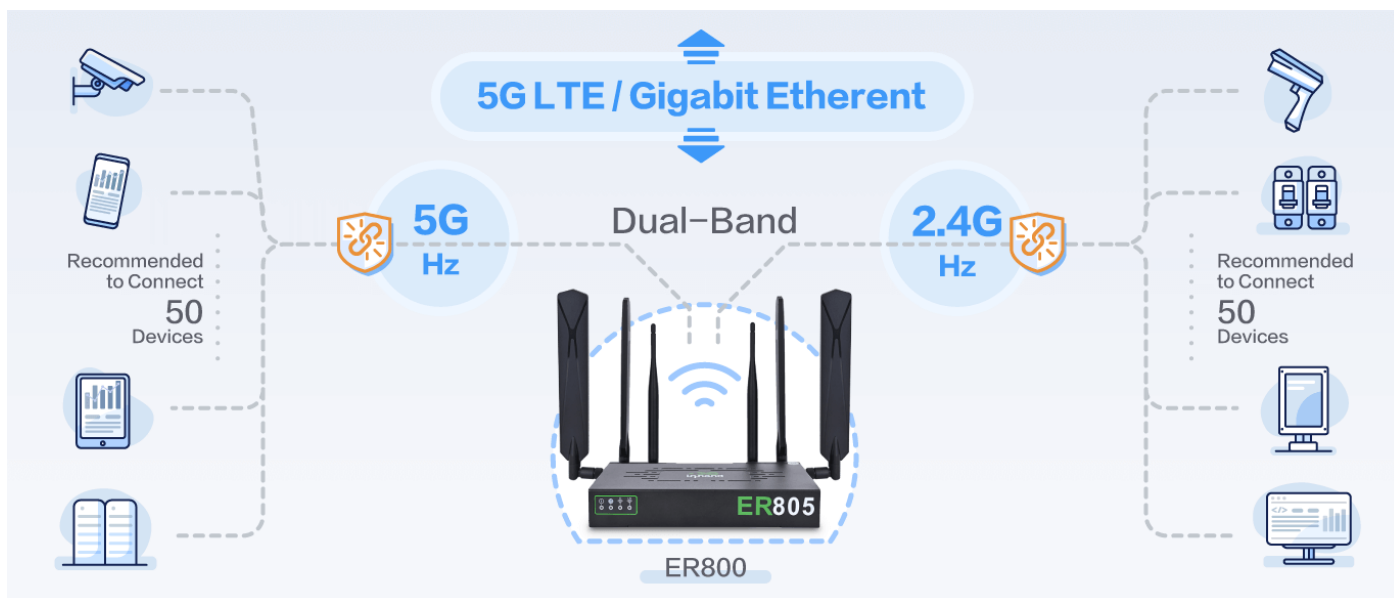
Cloud-Managed Branch Router – ER805 / E605

Bring new network experience from complexity to simplicity

- Zero-touch deployment
- Comprehensive security
- High-speed gigabit network
- SD-WAN
- Enjoy 5G network
- Delicacy of network management

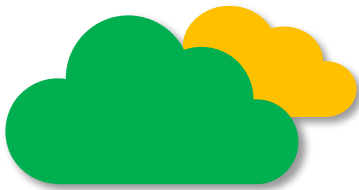


[Learn More](#)



Learn More Information:
<https://inhandnetworks.com/cloud-service/incloud-manager.html>
Contact Email: incloud@inhandnetworks.com





InCloud Manager Functionality Comparison

There have two service specifications:

- **InCloud Manager Essential Plan:** For simple device management, configuration, and upgrades. Applicable to all the devices that can be managed on InCloud Manager.
- **InCloud Manager Branch Professional Plan:** For branch SD-WAN networking and terminal remote access control, the functionality of Essential Plan is included. Applicable to ER805, ER605.

Functionality	Essential Plan	Branch Professional Plan
Secure Remote Cloud Configuration		
Individual Device Configuration	√	√
View/Edit Device Configuration	√	√
Clear Device Configuration	√	√
Copy to Device/Group	√	√
Restore to Factory Defaults	√	√
Device OS Updates	√	√
Remote Reboot	√	√
Group Device Configuration	√	√
View/Edit Device Configuration	√	√
Clear Device Configuration	√	√
Copy to Device/Group	√	√
Group Restore to Factory Defaults	√	√
Group OS Updates	√	√
Group Remote Reboot	√	√
Remote Connect	√	√
Connect to Device UI	√	√
Console(CLI)	√	√
HTTPS	√	√
SSH	√	√
Network Feature		
Uplink	√	√
Cellular	√	√
3G/4G/5G	√	√
PPPoE	√	√
Dual SIM	√	√
APN	√	√

Functionality	Essential Plan	Branch Professional Plan
Network Feature		
Wired	√	√
Static IP	√	√
DHCP	√	√
PPPoE	√	√
Wireless	√	√
2.4GHz/5GHz	√	√
Network Policy	√	√
Link Detection	√	√
Link Backup	√	√
Load Balancing	√	√
Traffic Shaping	√	√
Policy Routing	√	√
Link Priority	√	√
IP Application	√	√
VLAN	√	√
DHCP server/client	√	√
DNS	√	√
DDNS*	√	√
Fixed Address List	√	√
IP Passthrough	√	√
VPN	√	√
IPSec VPN	√	√
L2TP VPN	√	√
Open VPN*	√	√
Firewall	√	√
Firewall Filtering based on IP/Port/protocol	√	√
NAT	√	√
Port Mapping	√	√
MAC Address Filtering*	√	√
Visibility & Analytics		
Global Overview	√	√
Device Statistics	√	√
Configuration / Firmware Status	√	√
Networking Method	√	√
Device Type	√	√
Alarm Overview	√	√
Traffic Trend / Statistics	√	√

Functionality	Essential Plan	Branch Professional Plan
Visibility & Analytics		
Device Dashboard	√	√
Device Information	√	√
Interface Panel	√	√
Uplink Quality: Jitter/Throughput/Latency/Loss	√	√
Connection History	√	√
Device Traffic Statistics: WAN/LAN/Cellular	√	√
Device Cellular Signal Analysis: RSSI/RSRQ/RSRP/SINR	√	√
Clients Statistics	√	√
Networking for IT/IoT		
Connector		√
Remote Maintenance Terminal Equipment		√
Connector Statistic		√
SD-WAN Overlay		√
Hub-Spoke Network Topology		√
Diagnostics & Troubleshooting		
Diagnostic Logs	√	√
Ping	√	√
Traceroute	√	√
Packet Capture	√	√
Device Event	√	√
GeoView Location Services		
Device Map Location	√	√
Alert Policy		
Alert Type	√	√
CPU utilization	√	√
Memory utilization	√	√
Cellular traffic threshold	√	√
Uplink status change	√	√
VPN status change	√	√
Device reboot	√	√
Configuration sync failed	√	√
Firmware upgrade	√	√
SIM switch	√	√

Functionality	Essential Plan	Branch Professional Plan
Alert Policy		
Notifications	√	√
SMS	√	√
Email	√	√
InCloud Manager APP	√	√
Accounts & Users		
User Management	√	√
Permissions Management	√	√
Two-factor Authentication	√	√
APP		
InCloud Manager APP	√	√

InCloud Manager Portal: star.inhandcloud.com

