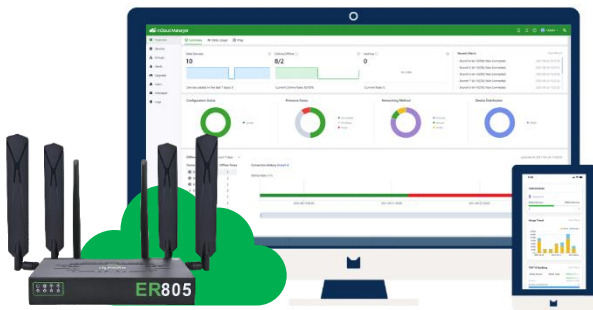


Cloud-Managed Networking Solution

Polish Your IT Networks and Manage Them in a More Intelligent Way



Cloud-Managed Networking Solution Overview

With accelerating digitalization, commercial organizations and manufacturers are connecting more branches and terminals, which requires efficient and convenient network management solutions. The InHand Cloud-Managed Networking Solution, which consists of the cloud-managed edge router ER series and the InCloud Manager, offers global customers fast, secure, simple and convenient networking services, creating unlimited possibilities for business growth.

Cloud-managed networking solution facilitates enterprises to migrate their network management work to the cloud, which can liberate IT personnel free from repetitive network operation, and allow them to spend less time on managing network and network infrastructure, therefore focusing on more valuable things for themselves and the company.



✓ Ultimate Experience ✓ Reduce IT Input ✓ Enhance Visibility ✓ Easy Netops

Asset Management

- Asset Information
- Remote Configuration
- Firmware Upgrade
- Remote Control Command
- Location Service
- Device Access Control

Network Services

- SD-WAN
- Site-to-Site Networking
- Firewall Policy
- Terminal Remote Control
- Collect Remote Data
- Smart Network Policies

Visual & Insight

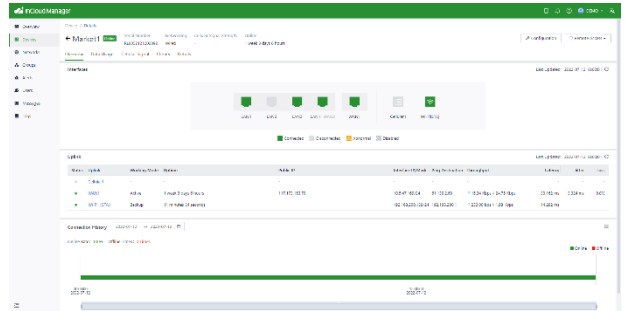
- Signal Quality Analysis
- Usage Statistics
- Client Statistics
- Link Quality
- Network Topology
- Alert Analysis

A More Intelligent, Concise, and Secure Network



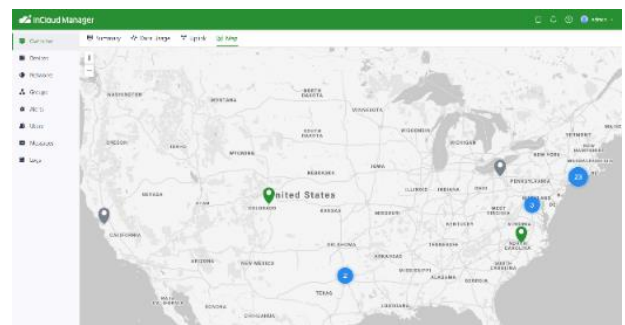
Zero-Touch Deployment

- IT staff completes the initial centralized deployment configuration in the cloud.
- Non-IT staff completes the hardware installation on site.
- Plug-and-play equipment for quick deployment



GUI Configuration, Not CLI

- Web GUI configuration, no complex commands.
- Simple configuration and intuitive interfaces ease IT operation without training.



Centralized Cloud Management

- Centralized platform
- Simple and intuitive graphical data
- Simple management and operation interface
- Batch configuration and upgrade



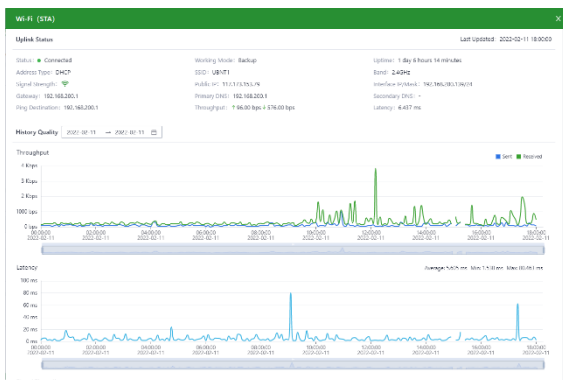
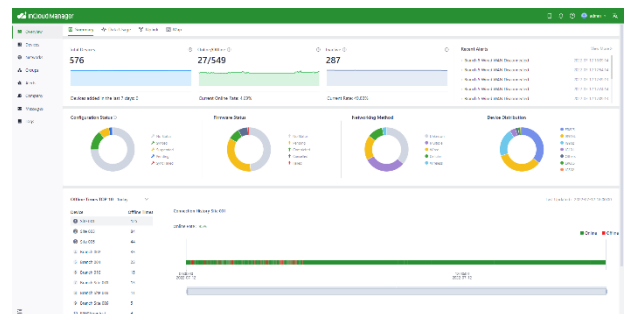
Automatic Network Monitoring and Alarm

To enhance the agility of network management, IT personnel can set alarm policies for a large number of devices on InCloud Manager. After faults occur, they can receive an abnormal notice and handle network faults immediately, reducing service losses caused by network interruptions.



Business Visibility

- Comprehensively analyze cellular network signal conditions, like RSSI, RSCP, RSRP, RSRQ
- Support compare and analyze the delay, jitter, and packet loss
- Multi-dimensional data dashboards
- Various data analyses of traffic, applications, devices, networks, users, etc.



Client Management

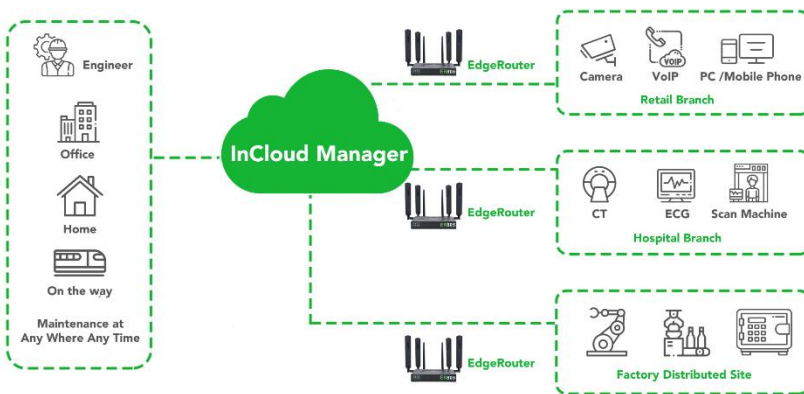
InCloud Manager provides full list monitoring of network members, which can intuitively realize the number of clients under the current network, connection type, connection duration, usage flow, and other important information, so as to analyze the stickiness of the client and gain business insight.

Cloud Connector Enables Rapid Control of Remote Terminals

The Cloud Connector adopts virtualization network technology and has intelligent IP mapping, with no need to change local network configuration and extensive IT/OT knowledge. It supports Windows, macOS, Android, iOS a variety of clients, engineers can remote control machine equipment anytime and anywhere; without investing too much cost, they can easily achieve remote man-machine interconnection.

Connect to Your Remote Sites

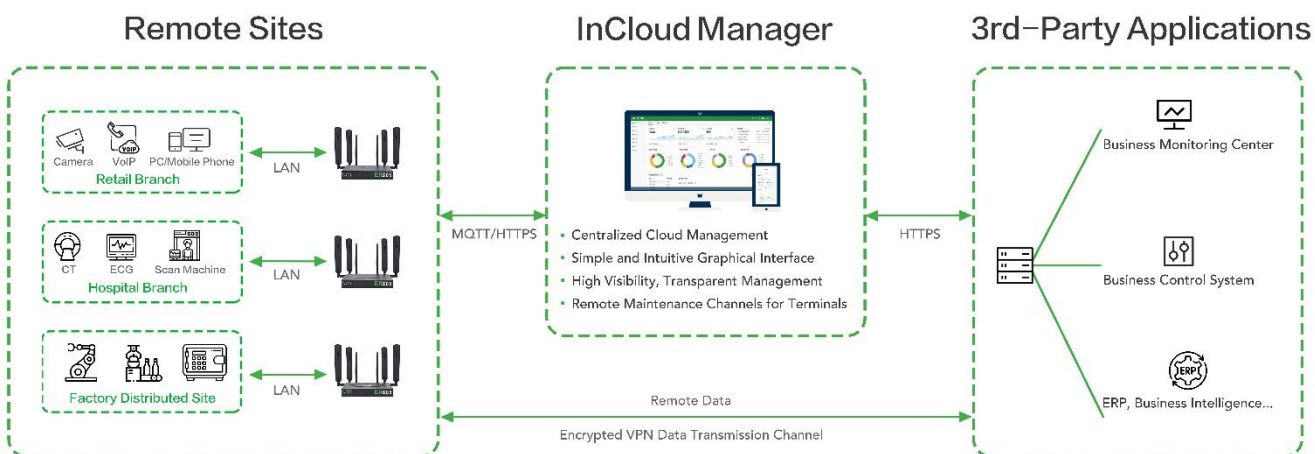
The Cloud Connector can quickly build a network bridge between engineers and machines. Through this secure and stable VPN channel, engineers can remotely maintain terminals, download programs, or transmit terminal data to their service data centers. The Cloud Connector is suitable for distributed terminals access in various IoT scenarios, like IPC, PLC, HIM, camera, and other controllers.



InCloud Manager records the connection time, access duration, and VPN traffic of each access, helping you track each connection. The visible access actions make the business management more transparent and safe.

Collect Your Remote Data

InCloud Manager provides a transmission channel for terminal devices to continuously report to the service system; supports the integration of three-party service systems, integrates device network management and terminal service management to create a complete service solution.



SD-WAN Helps to Build A Worry-Free Network

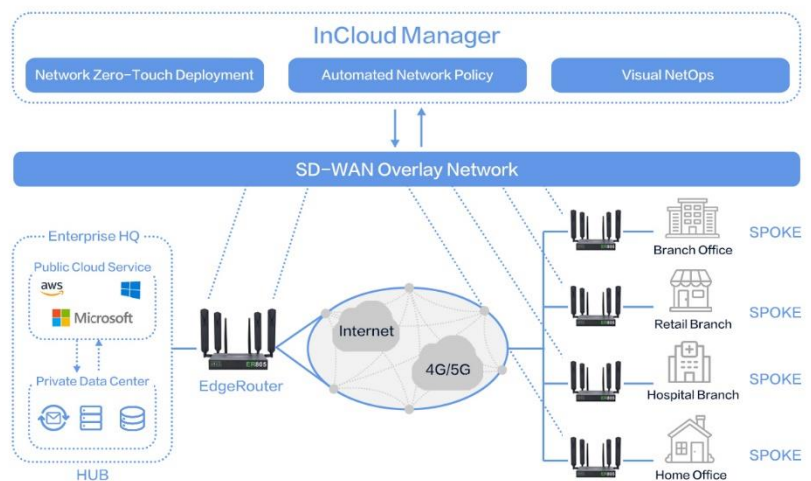
Traditional WAN architectures often face challenges such as difficult operation and deployment, high investment costs, and poor service access experience. The SD-WAN technology introduced by InCloud Manager can easily solve these problems. SD-WAN technology minimizes the burden of managing infrastructure and connectivity for industries by removing the burden of traffic management from physical devices and shifting it to software for deployment and management flexibility.

Always Online Network Connection

InCloud Manager supports link backup. When a fault occurs, the network system can fail over according to the priority to ensure network connectivity. Combined with load balancing technology, it can greatly improve bandwidth utilization while taking into account redundancy and bringing stable and reliable network connections.

Fast Interconnection Between Branches

With just a few clicks, InCloud Manager can automatically deliver configuration to the communication device according to the planned network topology. The device will automatically create VPN routes and carry out data encryption and key exchange. IT personnel can also quickly build the network between sites without professional network technical knowledge.



Reduce Dedicated Line Input

The SD-WAN router supports low-cost network connections such as cellular, broadband, and optical fiber, covering almost all networking environments. With the SD-WAN capability, it can significantly reduce network costs and help enterprises quickly achieve large-scale network deployment.

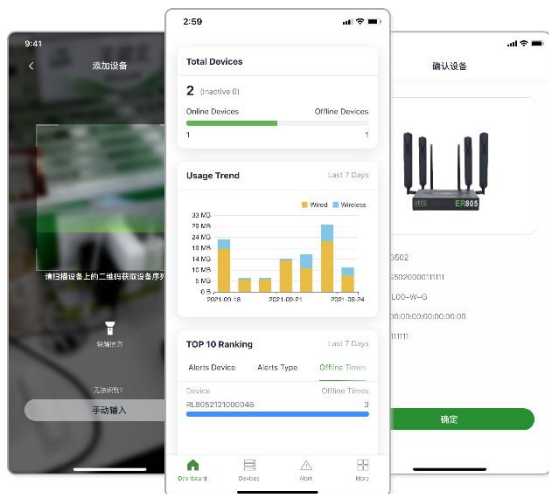


Excellent Networking Access Experience

InCloud Manager provides flexible traffic shaping technology. Users can customize important services to be forwarded first. At the same time, through link quality detection, intelligent uplink selection, and other technologies, the link switch without perception is realized to ensure a high-quality network experience.

Anytime Anywhere, Control Business In Hand

The mobile APP of InCloud Manager supports scanning code to configure the device to connect to the cloud, without the need to connect the network cable, which can greatly simplify the configuration operation.



The APP can monitor device interface status, traffic usage, network signals, throughput rate, and latency, view device growth trends, device status distribution, traffic trend analysis, and alarm ranking, and gain insight into device and network conditions from charts.

The portability of mobile phones makes it especially convenient to use mobile applications. As long as you have access to the internet, you can monitor and manage on-site network devices and applications through the APP anytime and anywhere.

Network and Service Security

InCloud Manager provides a variety of security protection strategies and combined with data encryption transmission, unified identity authentication, access control, threat identification, and other comprehensive security protection means, greatly improve the risk defense ability of branch networks, to provide a safe and reliable network environment for enterprises.



In order to ensure the security and privacy of business data, the system design adopts the separation strategy of business data and management data. InCloud Manager promises that enterprise business data will not be uploaded to the cloud platform, so as to comprehensively protect the privacy and security of business data.

One-Stop IT Hardware

Cloud -Managed 5G Branch Router – ER805 / ER605

Bring new network experience from complexity to simplicity



Branch Access

- Capacity: 600Mbps
- VPN Capacity: 200Mbps
- Terminals Connected No.: 75-100

Cellular Network Access

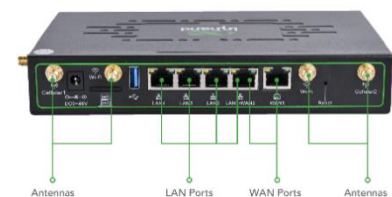
- Global 5G/4G Cellular Networks
- Downlink Velocity up to 2Gbps
- SA/NSA Networking

Wired Internet Access

- 5*Gigabit Ethernet Port
- Dual WAN Link
- WAN/LAN
- VLAN

Wi-Fi Access

- Secure Gigabit Wi-Fi Network
- 802.11.ac/a/b/g/n, 2.4G+5G Wi-Fi Concurrency
- Bandwidth up to 1200Mbps
- AP/STA Mode

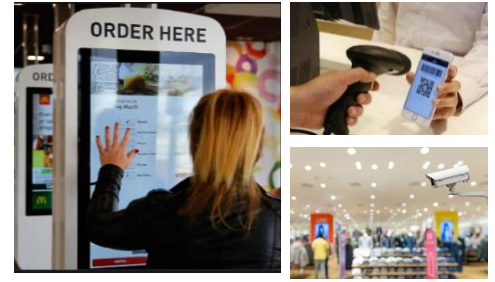


[Learn More](#)

Solution Application

Retail Branch Networking

- Easy and fast business deployment
- Reliable connectivity for shoppers, staff, and terminal devices
- Predictable and secure network infrastructure
- Remote access to terminal devices
- Remote centralized management for all stores



Enterprise Office Networking

- Fast and uninterrupted WAN connectivity
- Rapid site-to-site networking
- Flexible traffic shaping policies
- Easy and quick deployment
- Cloud-based management with InCloud Manager



5G + Remote Healthcare

- 5G internet access
- High-speed communications with ultra-low latency
- VPN protection for data security
- "Always online" connection
- Remote centralized management with InCloud Manager



Learn More Information:

<https://inhandnetworks.com/solutions/cloud-managed-networking-solution.html>

Contact Email: incloud@inhandnetworks.com



Solution Subscription Functionality Comparison

There have two service specifications:

- **InCloud Manager Essential Plan:** For simple device management, configuration, and upgrades. Applicable to all the devices that can be managed on InCloud Manager.
- **InCloud Manager Branch Professional Plan:** For branch SD-WAN networking and terminal remote access control, the functionality of Essential Plan is included. Applicable to ER805, ER605.

Functionality	Essential Plan	Branch Professional Plan
Secure Remote Cloud Configuration		
Individual Device Configuration	√	√
View/Edit Device Configuration	√	√
Clear Device Configuration	√	√
Copy to Device/Group	√	√
Restore to Factory Defaults	√	√
Device OS Updates	√	√
Remote Reboot	√	√
Group Device Configuration	√	√
View/Edit Device Configuration	√	√
Clear Device Configuration	√	√
Copy to Device/Group	√	√
Group Restore to Factory Defaults	√	√
Group OS Updates	√	√
Group Remote Reboot	√	√
Remote Connect	√	√
Connect to Device UI	√	√
Console(CLI)	√	√
HTTPS	√	√
SSH	√	√
Network Feature		
Uplink	√	√
Cellular	√	√
3G/4G/5G	√	√
PPPoE	√	√
Dual SIM	√	√
APN	√	√

Functionality	Essential Plan	Branch Professional Plan
Network Feature		
Wired	√	√
Static IP	√	√
DHCP	√	√
PPPoE	√	√
Wireless	√	√
2.4GHz/5GHz	√	√
Network Policy		
Link Detection	√	√
Link Backup	√	√
Load Balancing	√	√
Traffic Shaping	√	√
Policy Routing	√	√
Link Priority	√	√
IP Application		
VLAN	√	√
DHCP server/client	√	√
DNS	√	√
DDNS*	√	√
Fixed Address List	√	√
IP Passthrough	√	√
VPN		
IPSec VPN	√	√
L2TP VPN	√	√
Open VPN*	√	√
Firewall		
Firewall Filtering based on IP/Port/protocol	√	√
NAT	√	√
Port Mapping	√	√
MAC Address Filtering*	√	√
Visibility & Analytics		
Global Overview		
Device Statistics	√	√
Configuration / Firmware Status	√	√
Networking Method	√	√
Device Type	√	√
Alarm Overview	√	√
Traffic Trend / Statistics	√	√

Functionality	Essential Plan	Branch Professional Plan
Visibility & Analytics		
Device Dashboard	√	√
Device Information	√	√
Interface Panel	√	√
Uplink Quality: Jitter/Throughput/Latency/Loss	√	√
Connection History	√	√
Device Traffic Statistics: WAN/LAN/Cellular	√	√
Device Cellular Signal Analysis: RSSI/RSRQ/RSRP/SINR	√	√
Clients Statistics	√	√
Networking for IT/IoT		
Connector		√
Remote Maintenance Terminal Equipment		√
Connector Statistic		√
SD-WAN Overlay		√
Hub-Spoke Network		√
Topology		√
Diagnostics & Troubleshooting		
Diagnostic Logs	√	√
Ping	√	√
Traceroute	√	√
Packet Capture	√	√
Device Event	√	√
GeoView Location Services		
Device Map Location	√	√
Alert Policy		
Alert Type	√	√
CPU utilization	√	√
Memory utilization	√	√
Cellular traffic threshold	√	√
Uplink status change	√	√
VPN status change	√	√
Device reboot	√	√
Configuration sync failed	√	√
Firmware upgrade	√	√
SIM switch	√	√

Functionality	Essential Plan	Branch Professional Plan
Alert Policy		
Notifications	√	√
SMS	√	√
Email	√	√
InCloud Manager APP	√	√
Accounts & Users		
User Management	√	√
Permissions Management	√	√
Two-factor Authentication	√	√
App		
InCloud Manager APP	√	√

InCloud Manager Portal: star.inhandcloud.com

