

# InRouter900 Series

## Industrial LTE Router

### Highly Scalable, Reliable and Secure Networking

Throughout the years, the reliable and intelligent features, highly rugged build and great efficiency of use of the InRouters have supported customers globally and across industries to upgrade to a new generation M2M network systems.

As a full-featured series, the InRouter900 supports fast Ethernet, 3G/4G and xDSL technologies with built-in link redundancies to provide easy, uninterrupted Internet access for distributed devices. The high-reliability multi-layer link detection & recovery mechanism further safeguards continuous communications. The product features intelligent software functions of OSPF dynamic routing and DMVPN, to enable high-efficiency large-scale network deployment and management. With embedded support of InHand OpenDevice platform, it facilitates custom development of Python programs, meeting specialized requirements with much shortened time to deployment.

Among a wide range of applications, the InRouter900 can be used in electric power, remote automation, oil & gas, digital manufacturing, smart transportation, etc.



#### InHand Networks

3900 Jermantown Rd., Suite 150, Fairfax, VA 22030, USA

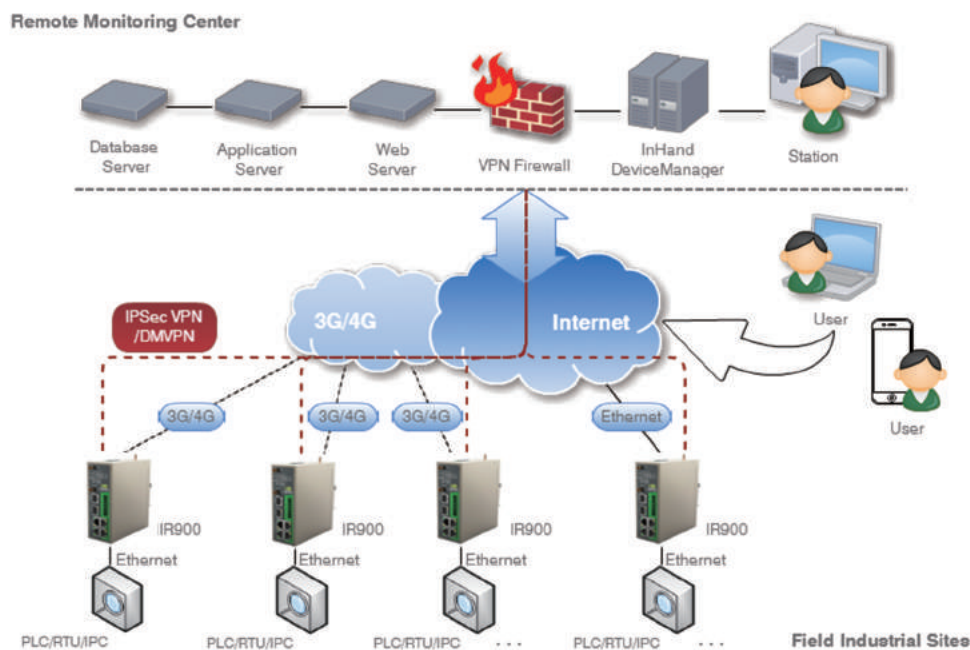
T: +1 (703) 348-2988

info@inhandnetworks.com

www.inhandnetworks.com



## Networking Scheme



## Features and Advantages

### Highly-reliable Communication Networks

- + Support fast Ethernet, 3G/4G, xDSL to provide easy network access
- + Dual-redundancy between WAN links: Ethernet, 3G/4G and Wi-Fi
- + Dual-redundancy of networks with two SIM cards
- + Multi-layer auto link detection and recovery
- + Support Wi-Fi 802.11b/g/n, AP and client modes
- + Support IPv6 (\*Only on FW00 models)

### High-efficiency Large-scale Deployment

- + Web and CLI tools for fast and easy configuration
- + RIP, and OSPF dynamic routing for scalable deployment
- + DMVPN for fast building of large mesh VPN networks
- + Standard SNMP and InHand Device Manager platform for efficient network management
- + Handheld device configuration through Wi-Fi, e.g. for pole-mounted routers

### InHand OpenDevice Platform

- + Integrated development environment provides easy access to system APIs and resources
- + Support Python (2.7), 70MB memory available

### Comprehensive Data Security

- + Support IPsec VPN, DMVPN, L2TP, OPEN VPN and CA to protect data transmission security
- + SPI, ACL, DoS defense, Ping blocking, attack defense, IP/MAC binding and other firewall protections
- + AAA and multi-level user authorization to establish central authentication and authorization control

### Rugged Hardware Platform

- + EMC Level 4/3
- + Wide operating temperature: -25~70°C
- + Wide voltage input: DC 12-48V
- + Metal housing with fan-less cooling, IP30



InRouter912



InRouter915



Scan

to select  
an IR900 model